

TO: James L. App, City Manager
FROM: Ron Whisenand, Community Development Director
SUBJECT: Acceptance of Parcel Map 05-0366 for Recordation (Thorndyke)
DATE: December 19, 2006

Needs: That the City Council consider steps toward finalizing development plans for a residential development and subdivision.

Facts: 1. Applicants Brian and Stephanie Thorndyke have requested that Parcel Map PR 05-0366 be accepted by the City for recordation. Parcel Map PR 05-0366 is located at 305-307 16th Street.

**Analysis
and**

Conclusion: Parcel Map PR 05-0366 was tentatively approved by the Planning Commission on May 23, 2006. All conditions imposed by the Planning Commission have been satisfied.

Policy

Reference: General Plan
California Government Code Section 66462 (“Subdivision Map Act”)
Paso Robles Municipal Code Section 22.16.160

Fiscal

Impact: None.

Options: That the City Council accept the subject map and agreement by taking the following actions:

- a. Adopt Resolution No. 06-xx accepting the recordation of Parcel Map PR 05-0366, a two-lot residential subdivision located at 305-307 16th Street.
- b. Amend, modify, or reject the above option.

Attachments: (2)

- 1) Vicinity/Reduced size parcel map
- 2) Resolution Final Map

BASIS OF BEARINGS

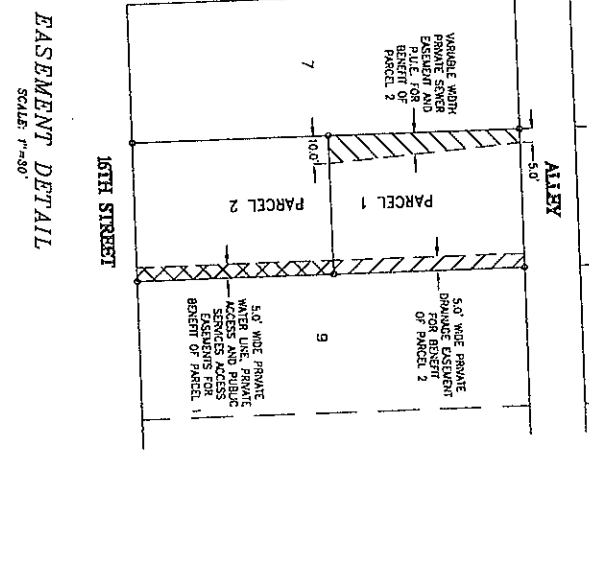
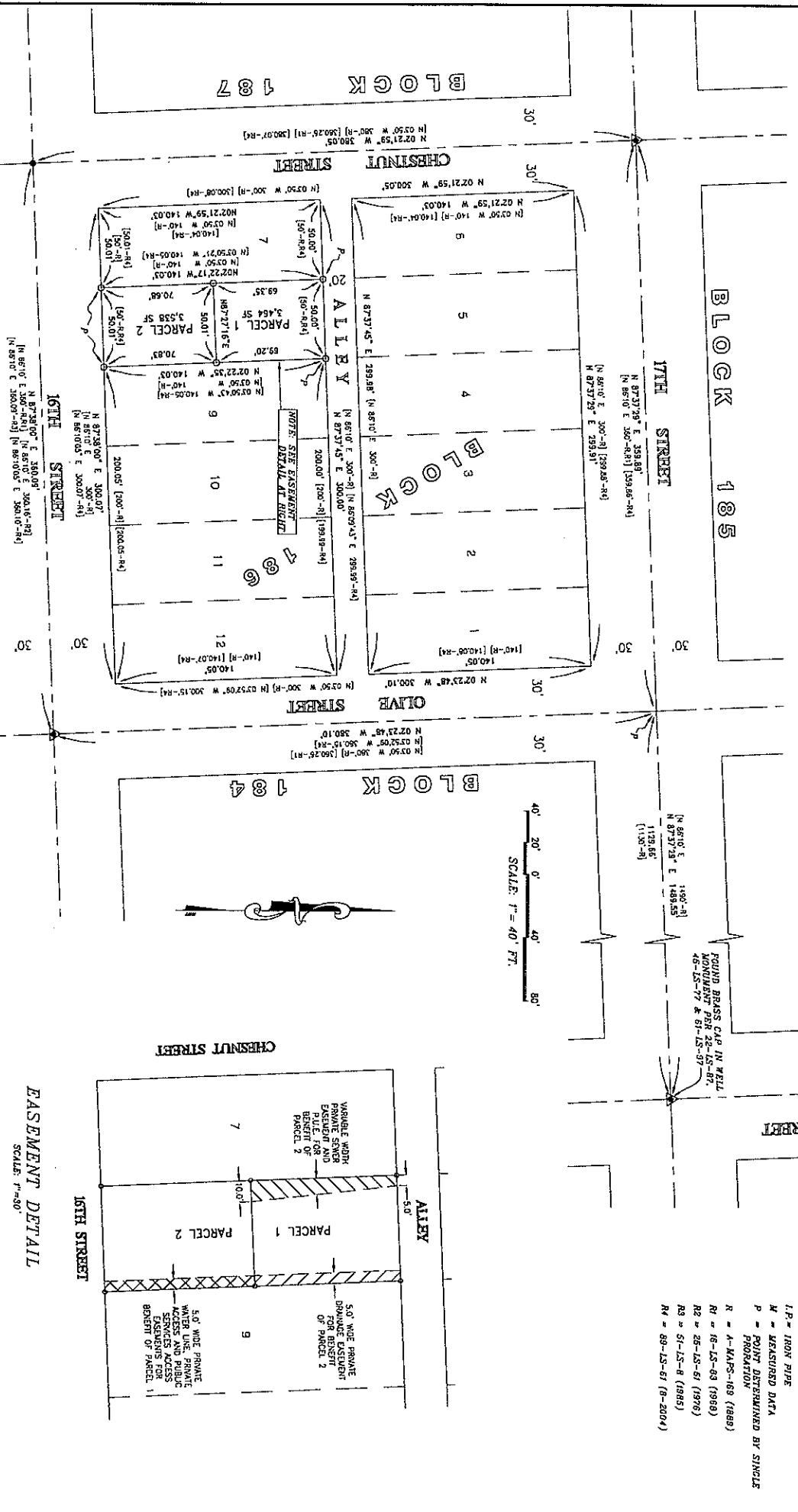
THE BEARINGS SHOWN HEREON, UNLESS INDICATED OTHERWISE, ARE BASED UPON THE NAD 83 COORDINATE SYSTEM, CSRS 93. THE MEAN MAPPING ANGLE AT THE SITE IS -1°32'15". MEASURED DISTANCES ARE GROUND DISTANCES.

PARCEL MAP PR 05-0366

BEING A SUBDIVISION OF LOT 8 IN BLOCK 186, IN THE CITY OF EL PASO DE ROBLES, COUNTY OF SAN LUIS OBISPO, STATE OF CALIFORNIA.

LEGEND:

- = SET 1" I.P. BRASS TAG "LS 4845 UNLESS OTHERWISE NOTED
- = FOUND NAIL IN SANDSTONE IN WELL MONUMENT PER RI, R2, & R3 UNLESS OTHERWISE NOTED
- ▲ = FOUND BRASS CAP IN WELL MONUMENT PER RI UNLESS OTHERWISE NOTED
- I.P. = IRON PIPE
- M = MEASURED DATA
- P = POINT DETERMINED BY SINGLE PROPORTION
- R = A-KARS-168 (1888)
- R1 = 18-LS-89 (1958)
- R2 = 25-LS-51 (1976)
- R3 = 51-LS-8 (1985)
- RM = 89-LS-51 (8-2004)



BLOCK 185

BLOCK 184

BLOCK 191

EASEMENT DETAIL

TWIN CITIES SURVEYING, INC.
 615-C S. MAIN STREET / P.O. BOX 777
 TEBULETOWN, CALIFORNIA 93483-0777
 SHEET 1 OF 2 (09/2) 434-1834 IN 05188

RESOLUTION NO. 06-

A RESOLUTION OF THE CITY COUNCIL OF THE CITY OF PASO ROBLES
ACCEPTING PARCEL MAP PR 05-0366 FOR RECORDATION
(THORNDYKE)

WHEREAS, the subdivider of tentative Parcel Map PR 05-0366, located at 305-307 16th Street has requested recordation of the final map; and

WHEREAS, the parcel map allows for the creation of two (2) parcels on a 0.16 acre lot; and

WHEREAS, all conditions of approval for this subdivision have been satisfied by the subdivider; and

WHEREAS, City staff has reviewed the final parcel map and finds it to be in substantial conformance with the approved tentative map and technically correct.

THEREFORE, BE IT RESOLVED AS FOLLOWS:

SECTION 1. That the City Council of the City of Paso Robles does hereby approve the final map for Parcel Map PR 05-0366 and authorize the execution and recordation of the parcel map.

PASSED AND ADOPTED by the City Council of the City of Paso Robles this 19th day of December, 2006 by the following vote:

AYES:

NOES:

ABSTAIN:

ABSENT:

Frank R. Mecham, Mayor

ATTEST:

Deborah D. Robinson, Deputy City Clerk